

Topaz MCV

123M - 1,800 Deck Cargo - Module Carrying Vessel

Provisional

Vessel Specifications



Vessel Specifications

General

Year built / builder	2017 - 2018 / Vard
Flag	Russia
Class	DNV GL
Call sign / IMO No.	9811567
Owners	Topaz Energy and Marine

Dimensions

Length overall	123 m
Breadth moulded	16.5 m
Depth moulded	5.6 m
Maximum draft	3 m
Deadweight	2,850 mt @ max draft

Machinery

Main propulsion	2 x Schottel Rudder Propeller, 1200 kW
Generators	3 nos. x Caterpillar C32, 994 bkW at 1800 rpm
Bow thrusters	2 x SCHOTTEL Tunnel Thruster Type STT 1 CP, 500 kW
Emergency generator	Caterpillar C4.4, 99 bkW
Ballast pumps 1 & 2	Allweiler MI 250-315, capacity 1000 m ³ per hr @ 3 bar
Ballast back-up pump	Allweiler MI 150-250, capacity 500 m ³ per hr @ 3 bar
Ballast treatment pumps 1 & 2	Allweiler Centrifugal, capacity 100 m ³ per hr

Capacities

Fuel oil	265.5 m3
Fresh	250.1 m3
Ballast tanks	4646.2 m3
Chiller	12 m3 (approx.)
Freezer	12 m3 (approx.)
Clear deck area	1450 m2 (approx.)

Provision crane	1,000 kg @ 15m radius
------------------------	-----------------------

Performance

Max speed	12 knots
Service speed	10 knots

Navigation equipment

Inmarsat C	INM-C SAILOR 6110 have integrated GLONAS system +LRIT+SSAS
GMDSS	2 x SAILOR 6222 Transceiver unit VHF class A SAILOR SP3520 GMDSS VHF
Radars	Radars (ARPA) Sperry Marine S-Band VisionMaster FT 340 CAT1343/12/MK/VM2/V3, 12ft 30kW antenna X-Band VisionMaster FT 340 CAT1343/6/MK/VM2/V3, 6ft 10kW antenna
DGPS	SAILOR 6570 DGNSS System
ECDIS	Sperry Marine VisionMaster FT DUAL ECDIS-E 24/D
AIS	SAILOR 6280 AIS
Autopilot	Sperry Marine Navipilot 4000
Navtex receiver	SAILOR 6391 Navtex System
Gyro compass	Sperry Marine NAVIGAT 200 dual gyrocompass
Gyro repeaters	1 x Bridge console/(2 Nos) Bridge Wings/(2 Nos) Steering Gear room
Magnetic compass	Binnacle NAVIPOL I
Communications: data / fax/ phone	Jotron 5113; 5123
MF / HF Radio	SAILOR 6310 MF/HF 150W System
SSB	(2 Nos) Motorola UHF Radio, type DM4400
VHF	Motorola VHF Radio, type DP4400; Motorola UHF Radio, type DP4401
Echo sounder	Skipper Echo Sounder GDS-101
Doppler speed log	SKIPPER EML224
SART	Jotron TRON SART, 9 GHz
EPIRB	Jotron TRON-40S and Jotron TRON- 60SX

Vessel Specifications

Fire fighting and safety equipment

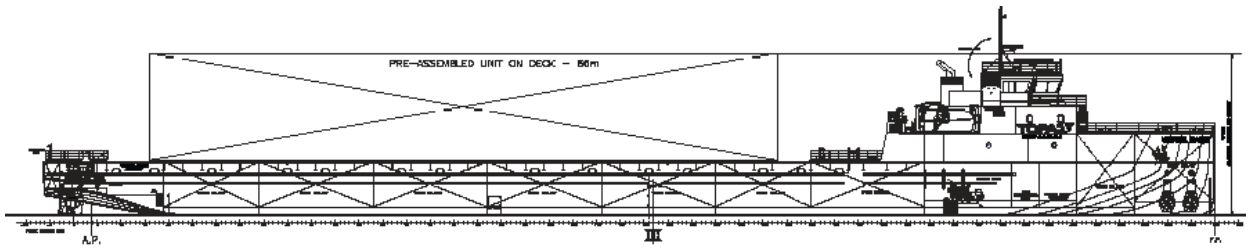
Life rafts	2 x Viking, 20 persons per unit, throw overboard life raft standard type
Lifeboat / Davit	2 x Norsafe JYN - 57, 26 persons per unit
Davit for life boat	2 x Norsafe LHD 60 life boat davit JYN-57

Accommodation

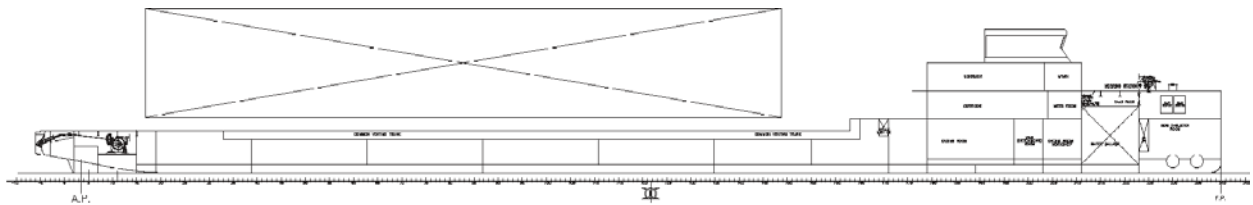
Single cabins	14
Double cabins	2
Total persons	18

Last revision April 2017

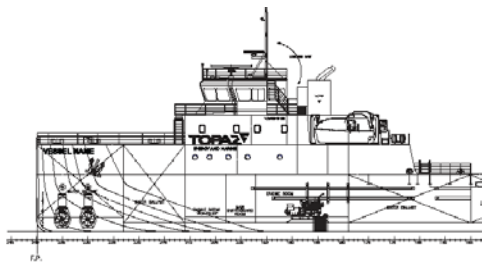
GA Specifications



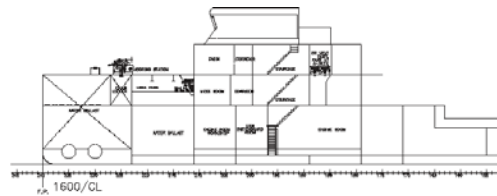
SB profile



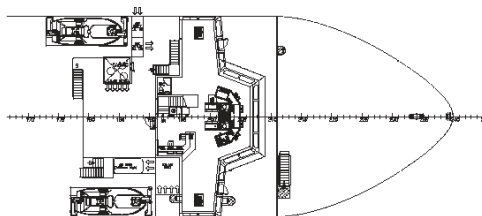
Centre profile



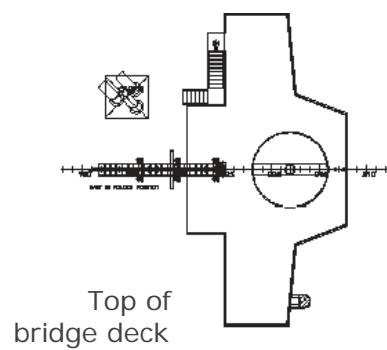
Port profile



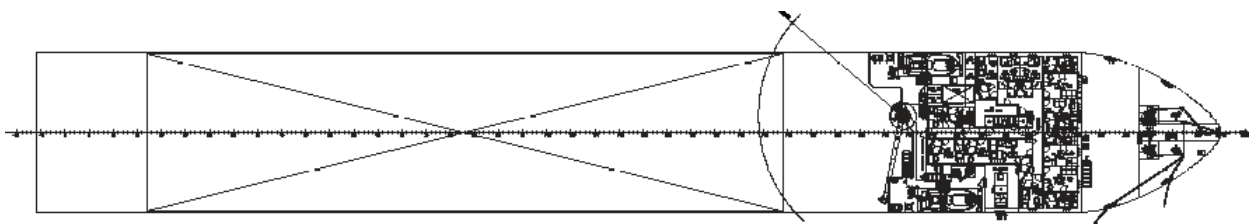
PS profile



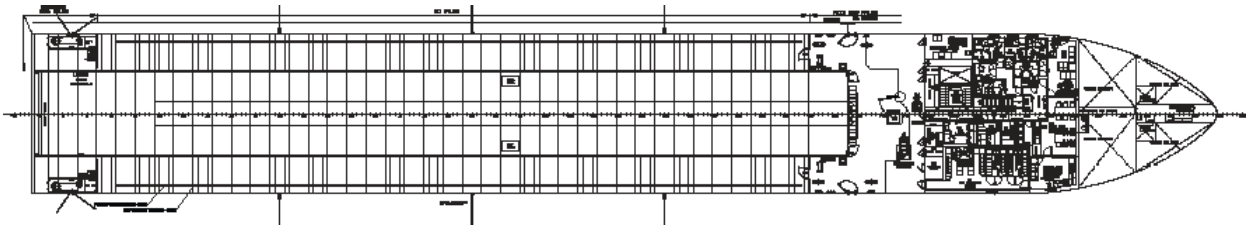
Bridge deck



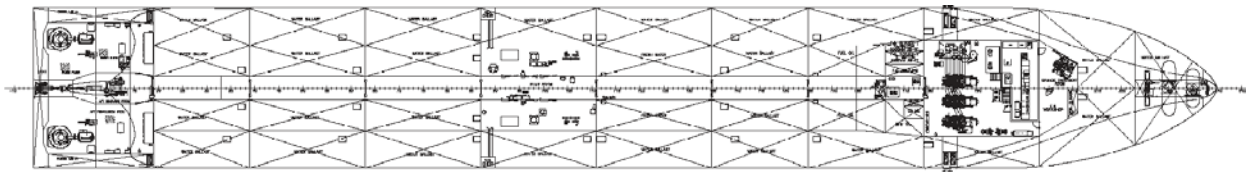
A-deck



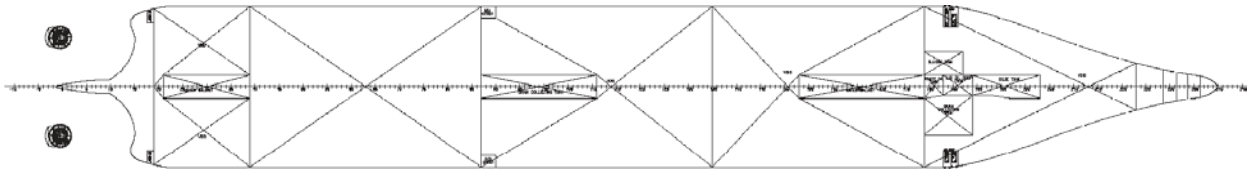
GA Specifications



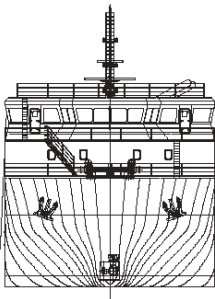
Main deck



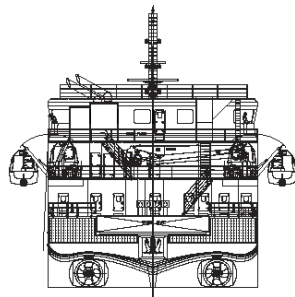
Tank top



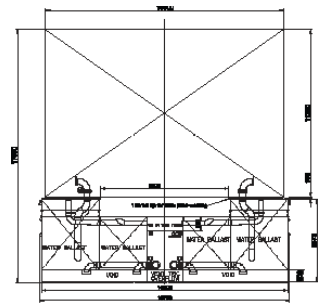
Below tank top



Front view

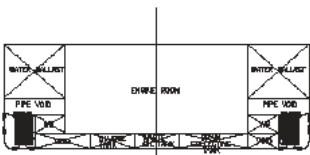


Aft view

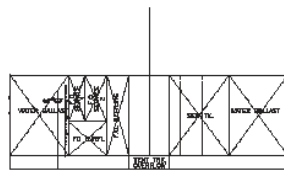


PAU on deck

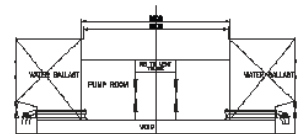
Mid ship view typical



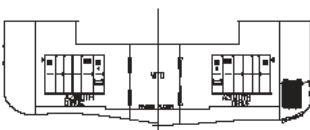
FR 182



FR 175

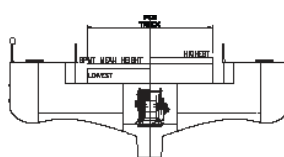


FR 88
Sea chest section

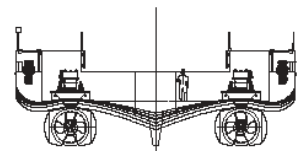


FR 16

FR 19



FR 6



FR 0

CONTACT

Commercial Department

Topaz Energy and Marine

Level 58, Almas Tower, Jumeirah Lakes Towers

P.O. Box 282800, Dubai, UAE

Tel +971 4 440 47 00

Fax +971 4 440 47 99

Email commercial.topaz@topazworld.com